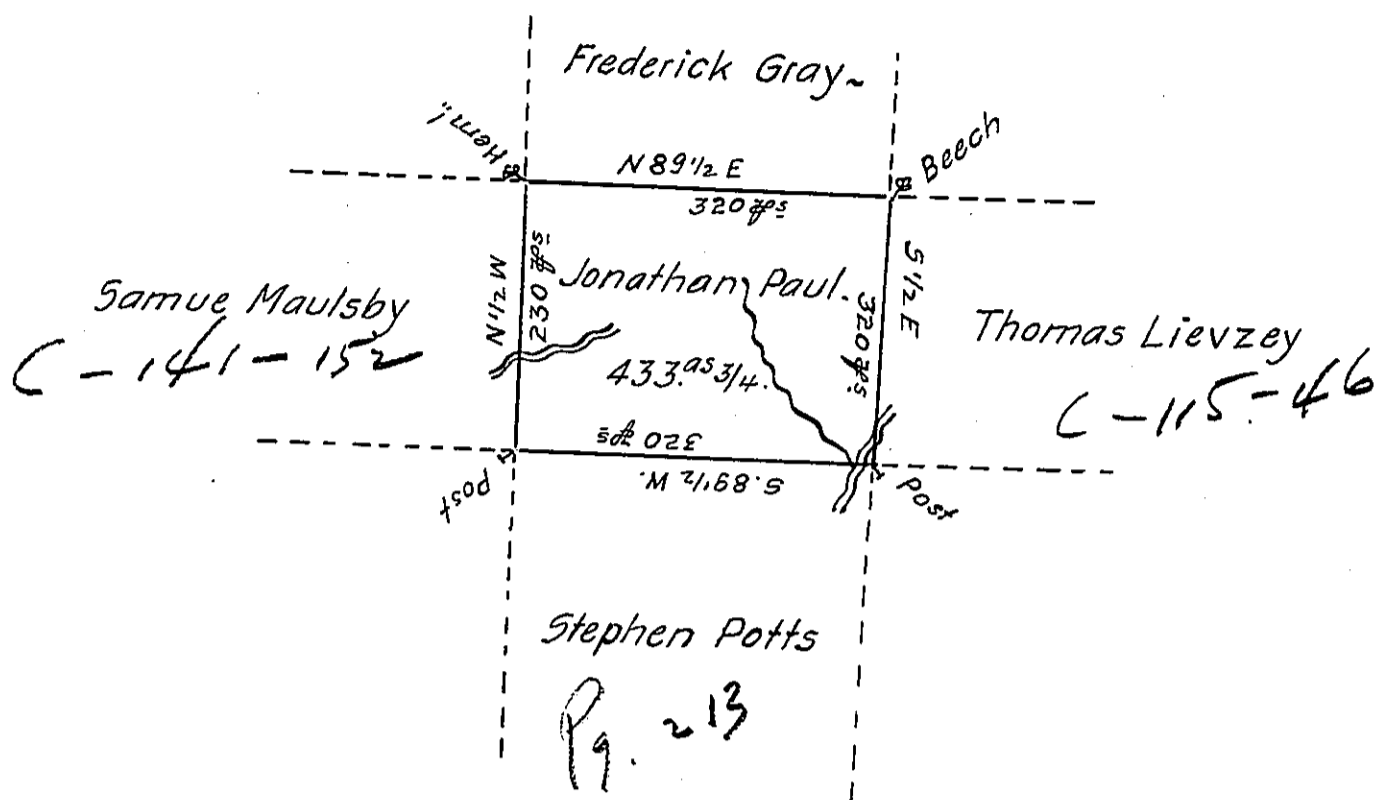


C-54-180



A Draught of a Tract of Land called \_\_\_\_\_ Situate in the County of Luzerne Adjoining Thomas Lievezey and Others, Surveyed the 7<sup>th</sup> day of May 1793. for Jonathan Paul in pursuance of a Warrant bearing date the 14<sup>th</sup> day of March 1793. Containing four hundred and thirty three Acres & three quarters ~ And the Allowance of Six 7/8 Cent for Road & c<sup>a</sup>.

To  
 Daniel Brodhead Esq. }  
 Surveyor General. }  
 Anty Crothers DS

IN TESTIMONY that the above is a copy of the original remaining on file in the Department of Internal Affairs of Pennsylvania, made conformably to an Act of Assembly approved the 16th day of February, 1833, I have hereunto set my Hand and caused the Seal of said Department to be affixed at Harrisburg, this thirty-first day of May 1906

*Lea C. N. Brown*  
 Secretary of Internal Affairs.